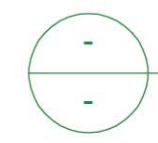
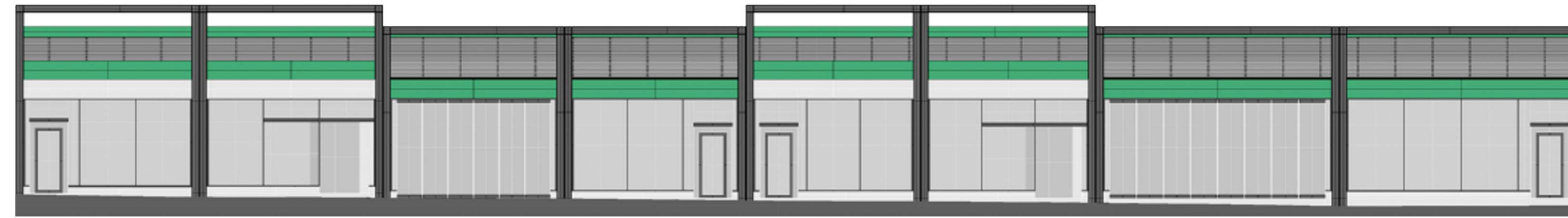
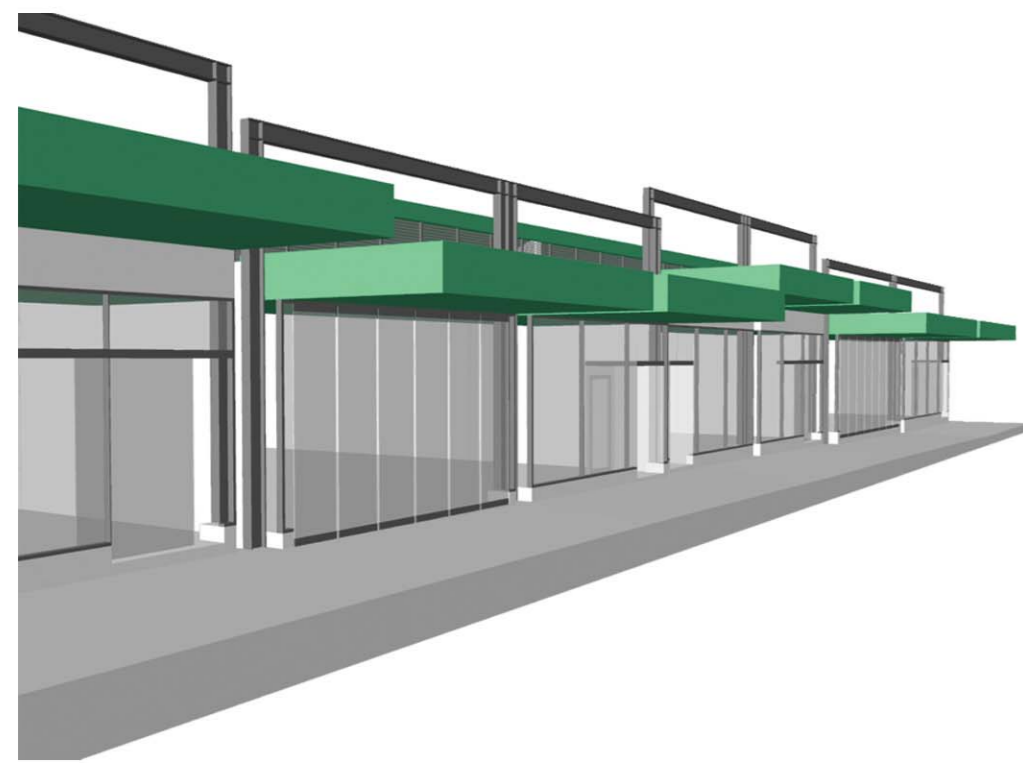
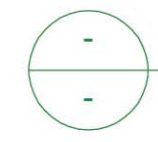


**BAIR STREET EAST**  
EXISTING STREET SCAPE



**BAIR STREET EAST**  
PROPOSED ELEVATION OF 37 - 43 BAIR STREET



**BAIR STREET EAST**  
PROPOSED ELEVATION OF 37 - 43 BAIR STREET



**BAIR STREET FACADE MATERIALS SCHEDULE**

**CANOPIES**

Colorbond fascia : Colour TBC  
Plasterboard ceiling : White colour



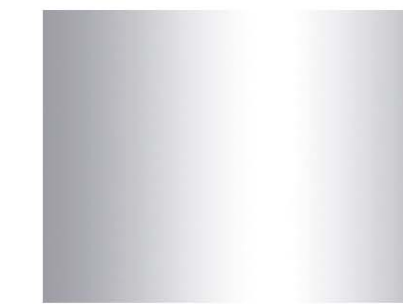
**STRUCTURAL STEEL FRAMES**

Micaceous paint : Gunmetal grey colour



**GLAZING**

Glazed panels with natural anodised aluminium frames  
Combination of sliding doors, hinged doors, bi-fold doors (all glazed)



**INFILL PANELS BELOW AND ABOVE WINDOWS**

Textured render : Off-white colour

